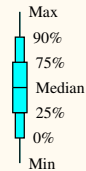


PS139/8 00 00N 011 00W

Position: N00.00 / W011.00

Model Base Time:

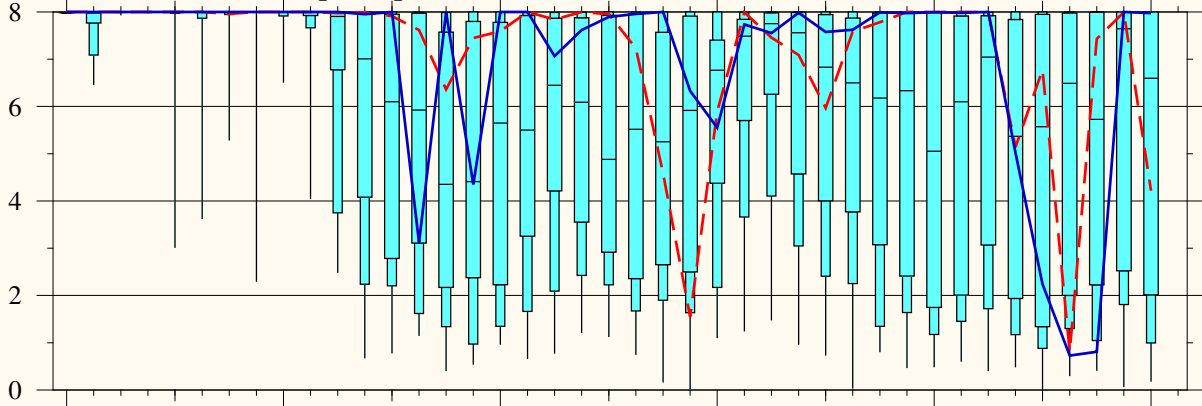
2024-05-02 / 00z



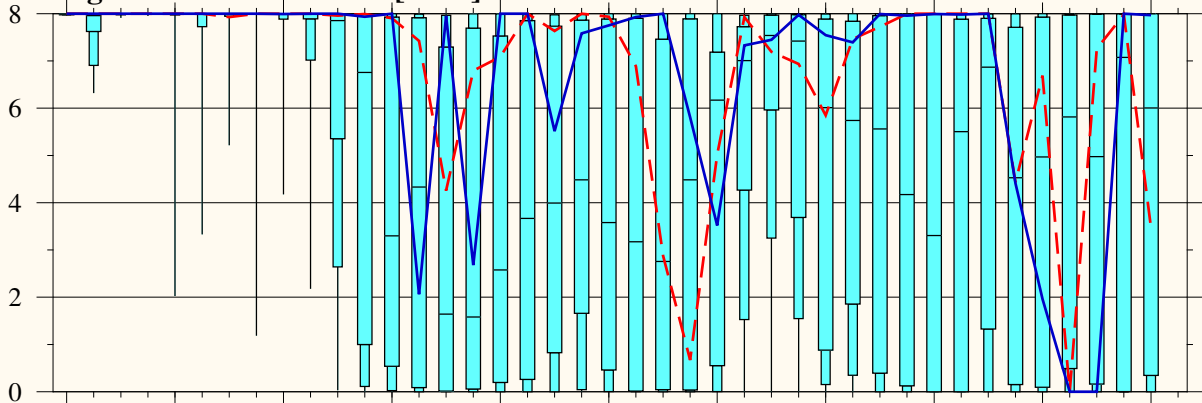
Control run

Operational run

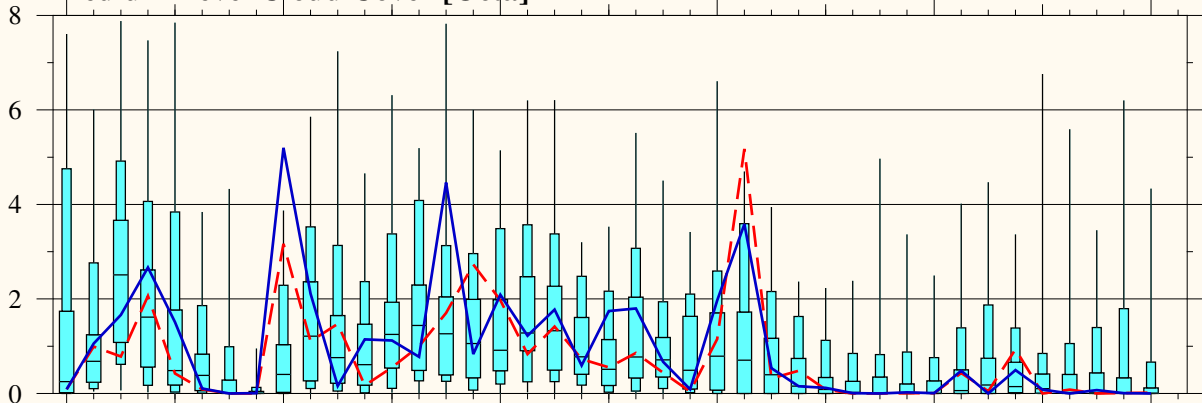
Total Cloud Cover [Octa]



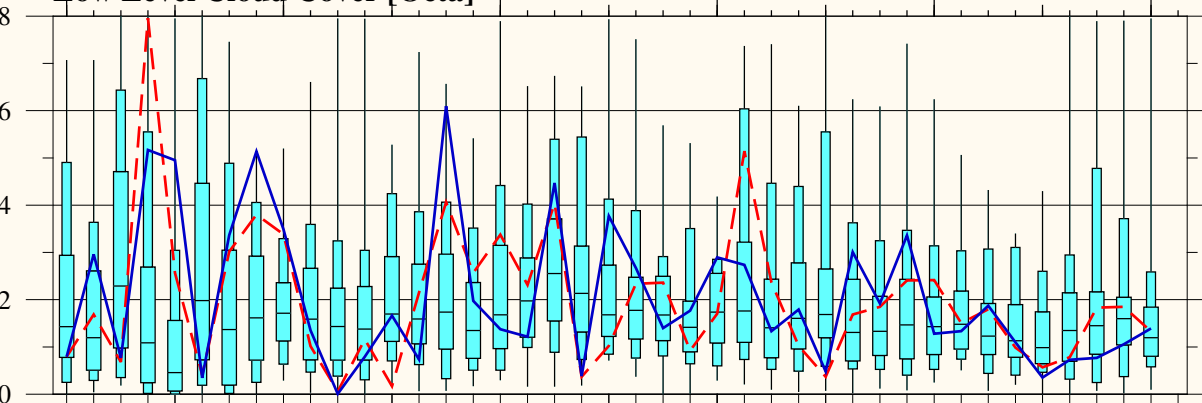
High Level Cloud Cover [Octa]



Medium Level Cloud Cover [Octa]



Low Level Cloud Cover [Octa]



Thursday
May 02

Friday
May 03

Saturday
May 04

Sunday
May 05

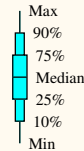
Monday
May 06

2024

PS139/8 00 00N 011 00W

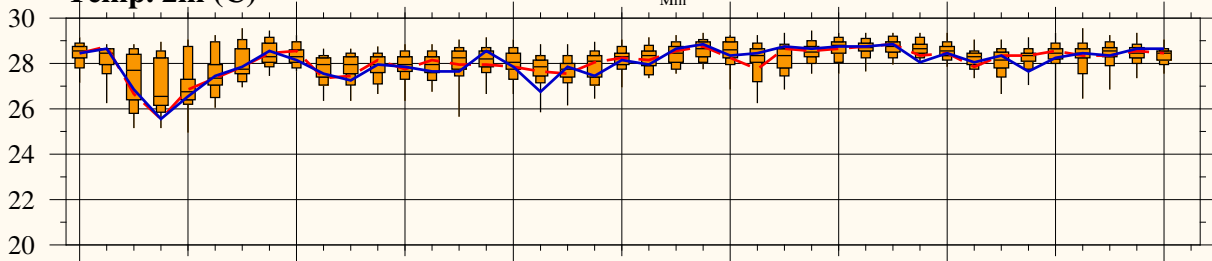
Position: N00.00 / W011.00

Model Base Time:
2024-05-02 / 00z

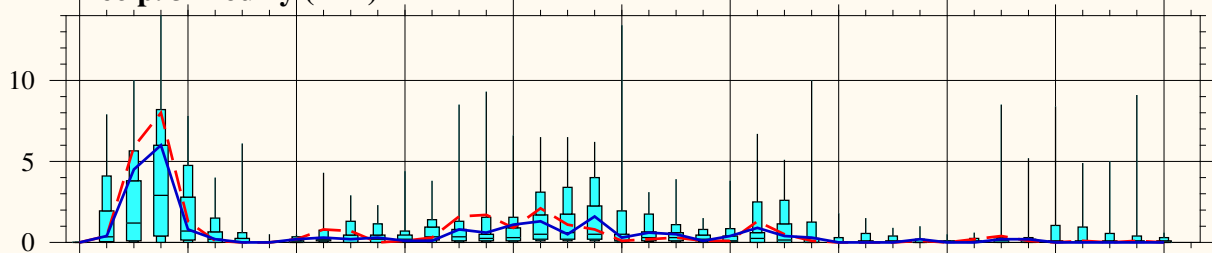


--- Control run
— Operational run

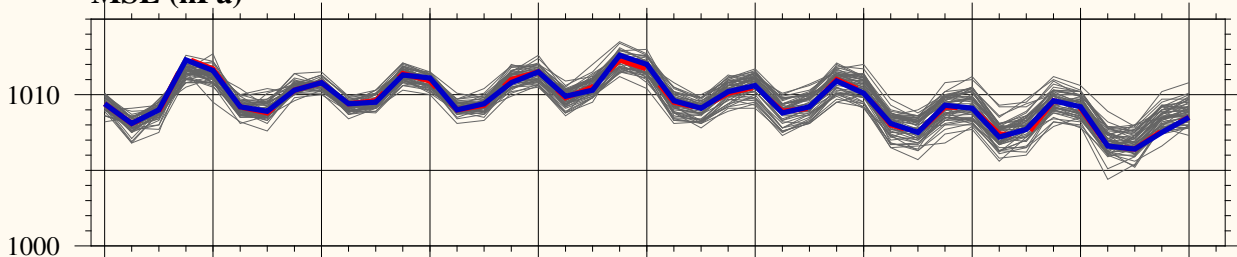
Temp. 2m (C)



Precip. 3-hourly (mm)



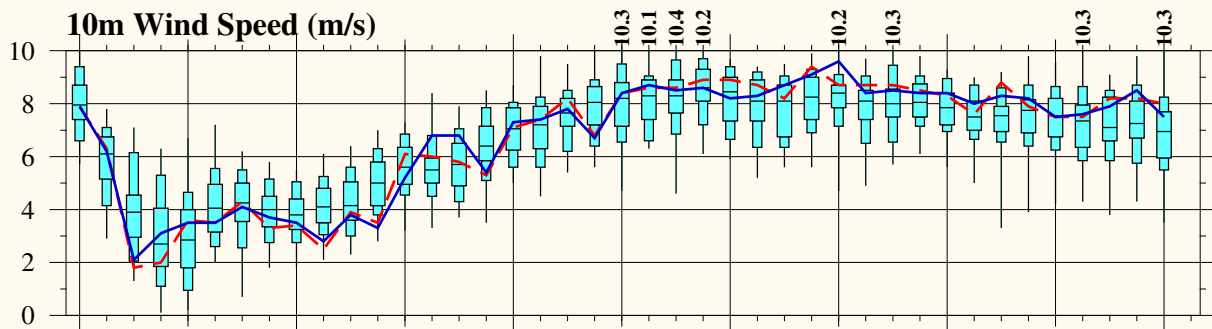
MSL (hPa)



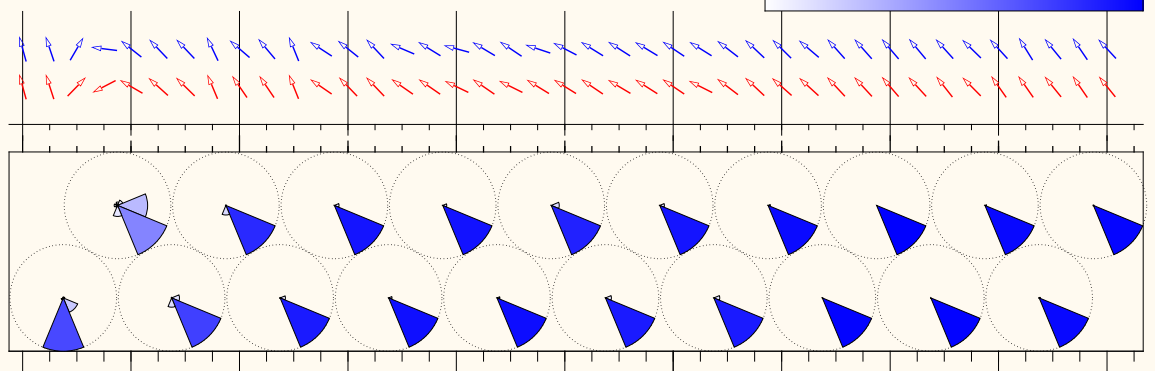
Prob. of gusts exceeding xx Bft (%)



10m Wind Speed (m/s)



Distribution of 10m Wind Direction



Thursday
May 02

Friday
May 03

Saturday
May 04

Sunday
May 05

Monday
May 06

2024