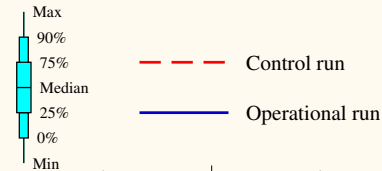
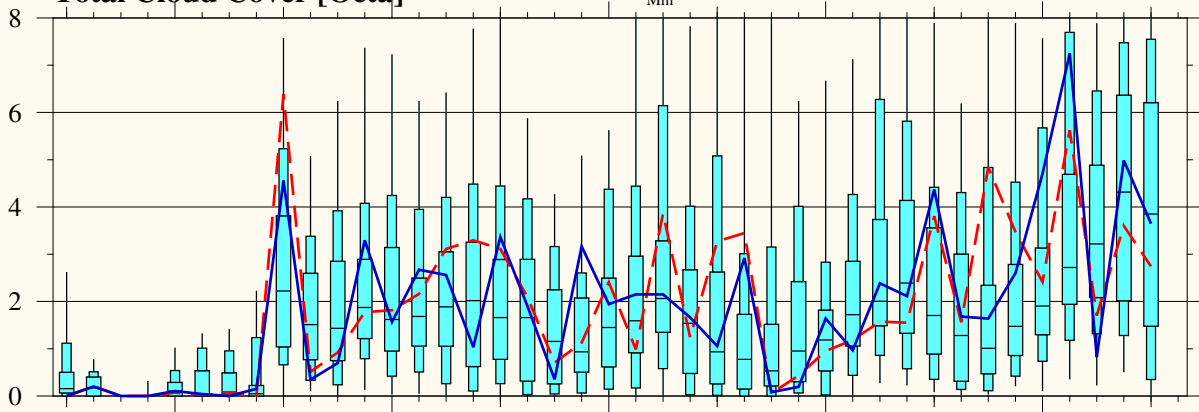


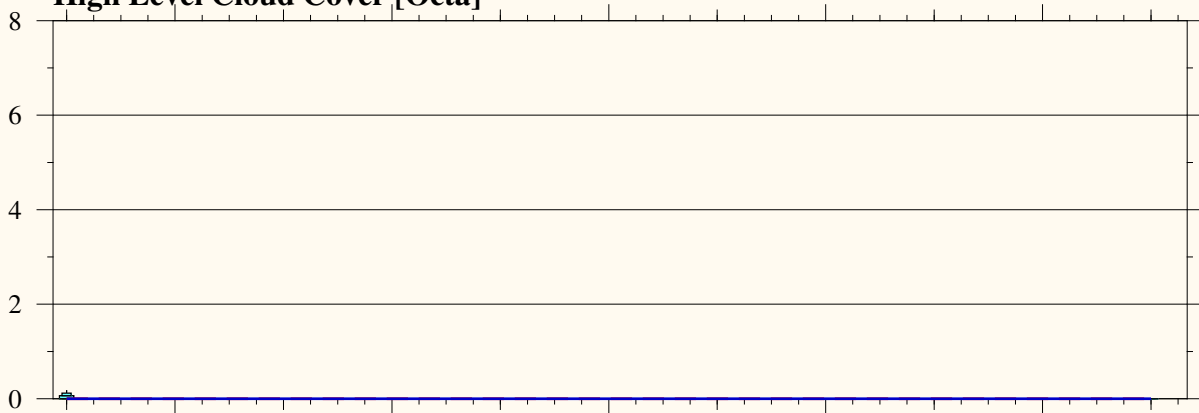
Model Base Time:  
2024-05-02 / 12z



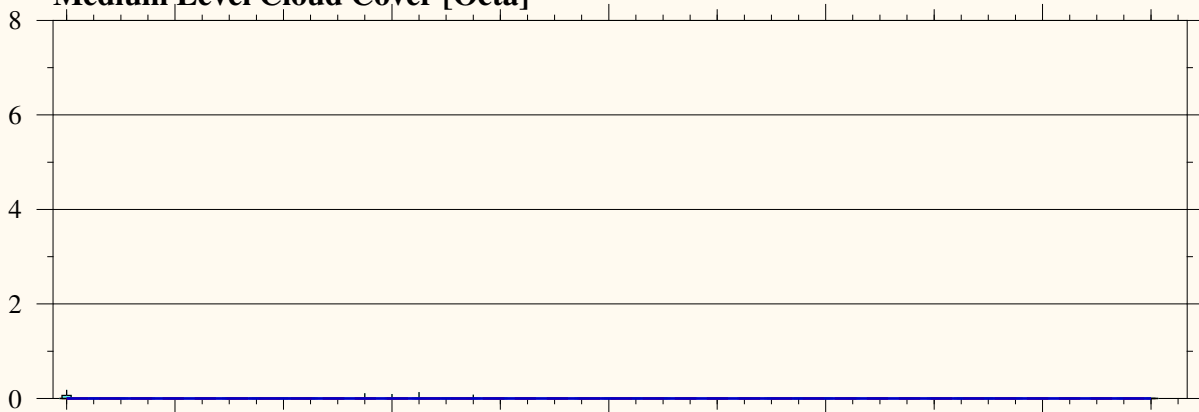
Total Cloud Cover [Octa]



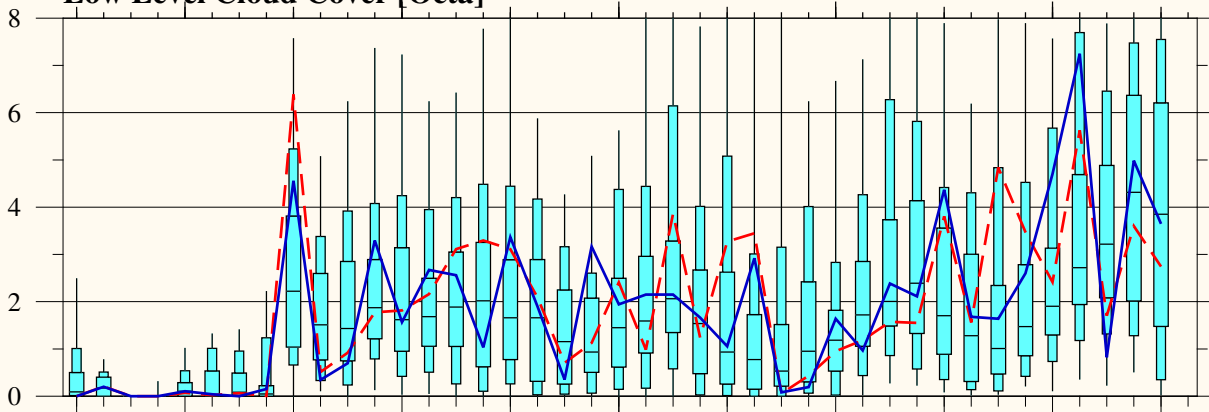
High Level Cloud Cover [Octa]



Medium Level Cloud Cover [Octa]



Low Level Cloud Cover [Octa]



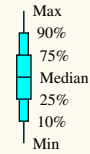
Thursday May 02      Friday May 03      Saturday May 04      **Sunday** May 05      Monday May 06      Tuesday May 07

2024

# PS139/10 20 00S 005 00E

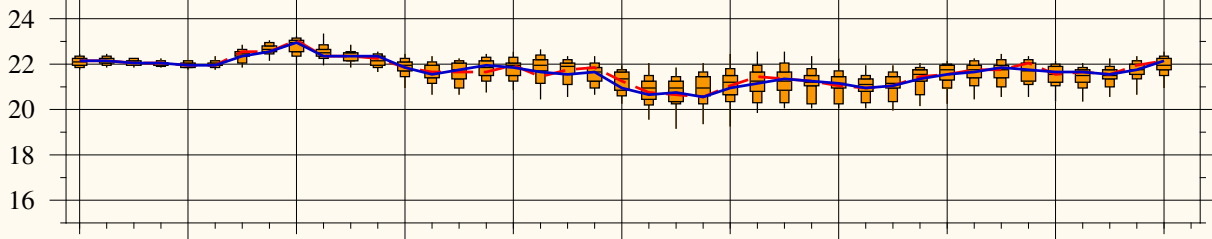
Position: S20.00 / E005.00

Model Base Time:  
2024-05-02 / 12z

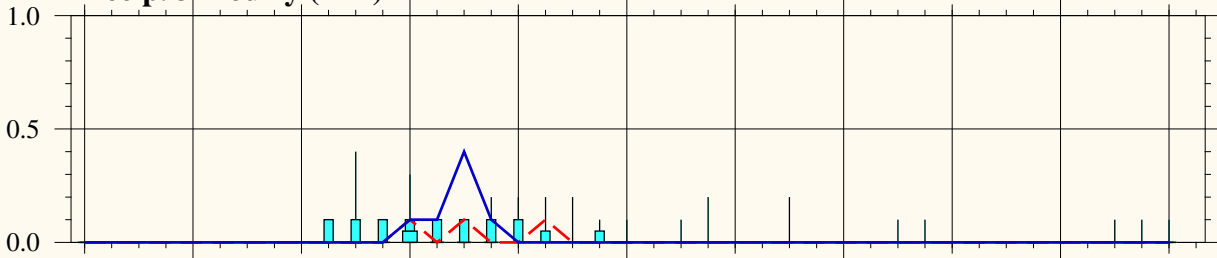


--- Control run  
— Operational run

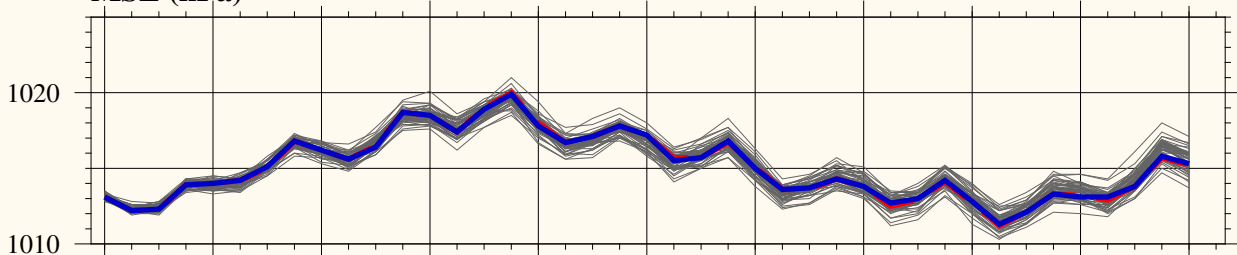
## Temp. 2m (C)



## Precip. 3-hourly (mm)



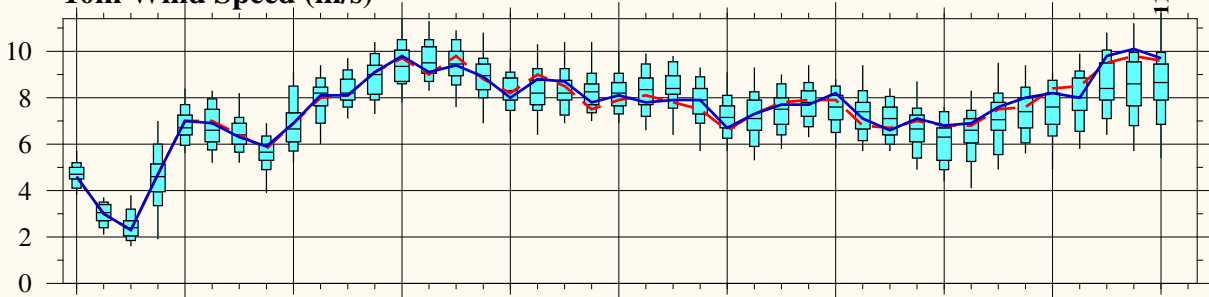
## MSL (hPa)



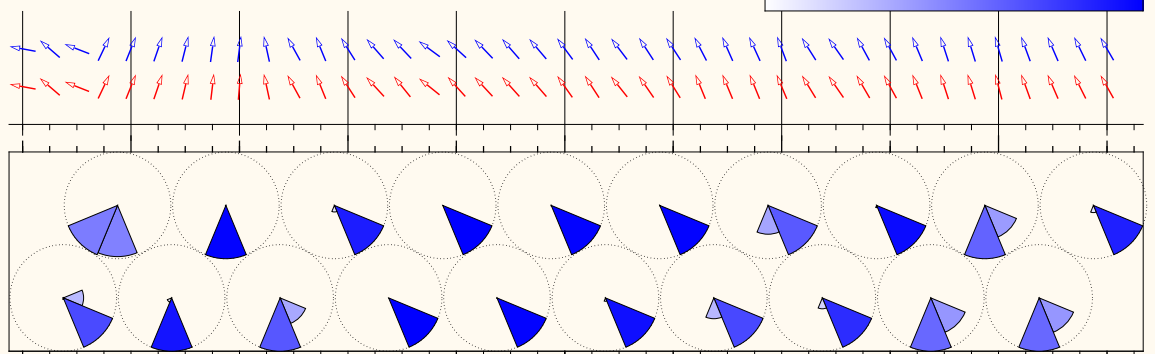
## Prob. of gusts exceeding xx Bft (%)



## 10m Wind Speed (m/s)



## Distribution of 10m Wind Direction



Thursday May 02      Friday May 03      Saturday May 04      **Sunday** May 05      Monday May 06      Tuesday May 07

2024