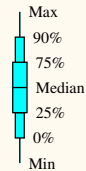


PS139/8 00 00N 011 00W

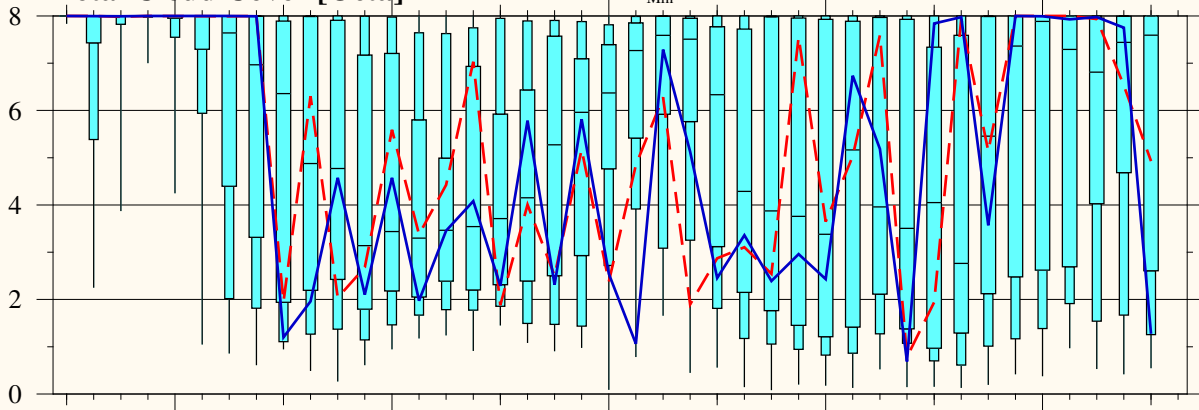
Position: N00.00 / W011.00

Model Base Time:  
2024-05-02 / 12z

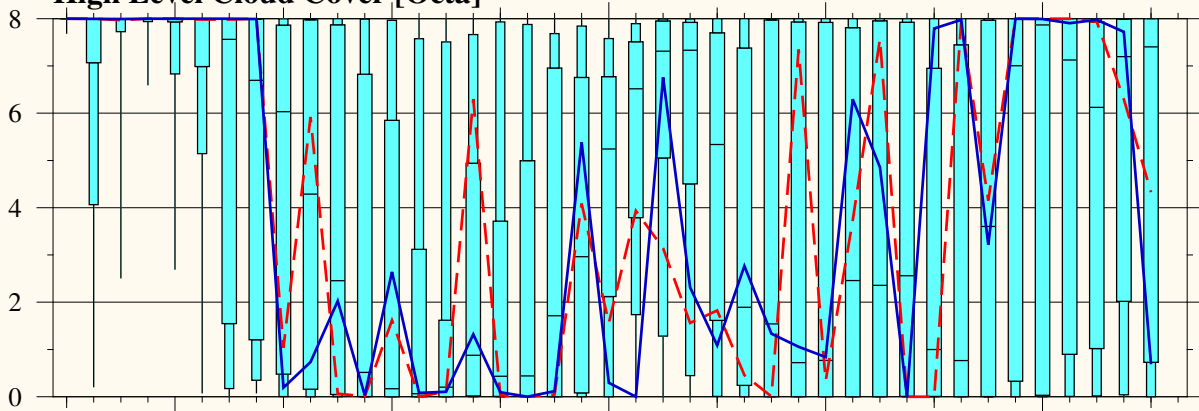


--- Control run  
— Operational run

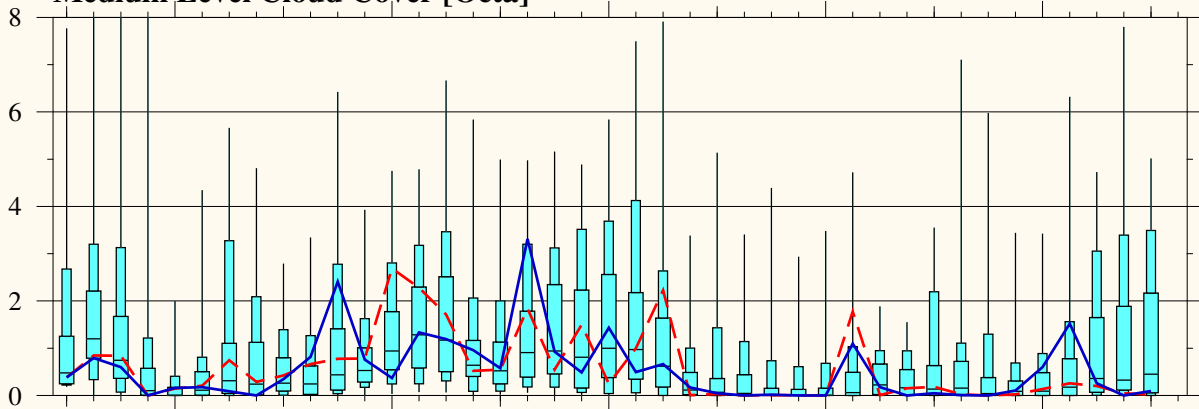
Total Cloud Cover [Octa]



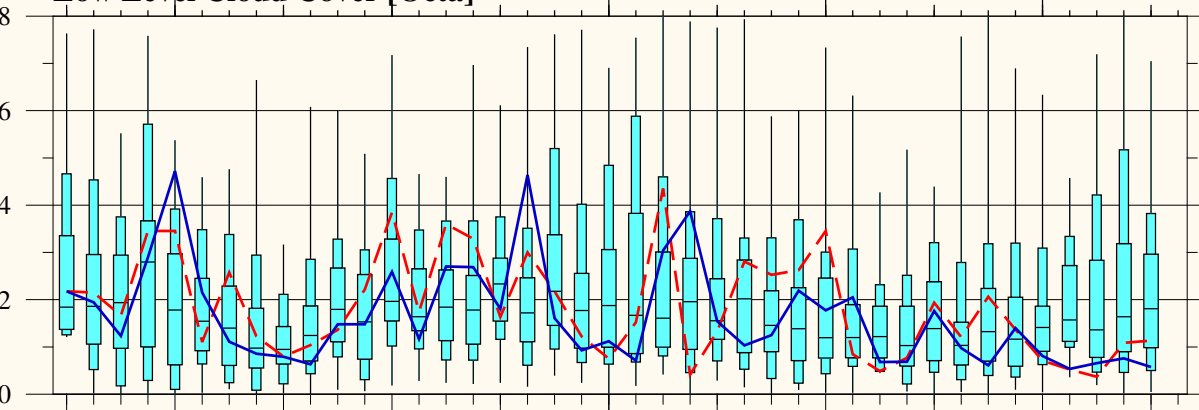
High Level Cloud Cover [Octa]



Medium Level Cloud Cover [Octa]



Low Level Cloud Cover [Octa]



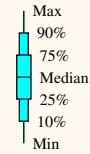
Thursday May 02      Friday May 03      Saturday May 04      **Sunday May 05**      Monday May 06      Tuesday May 07

2024

PS139/8 00 00N 011 00W

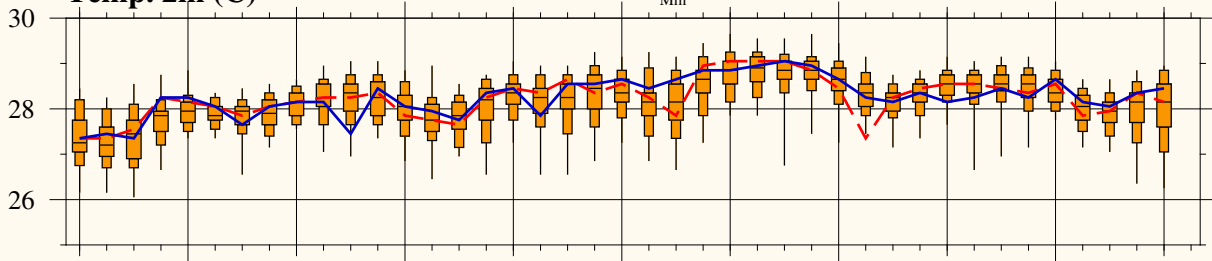
Position: N00.00 / W011.00

Model Base Time:  
2024-05-02 / 12z

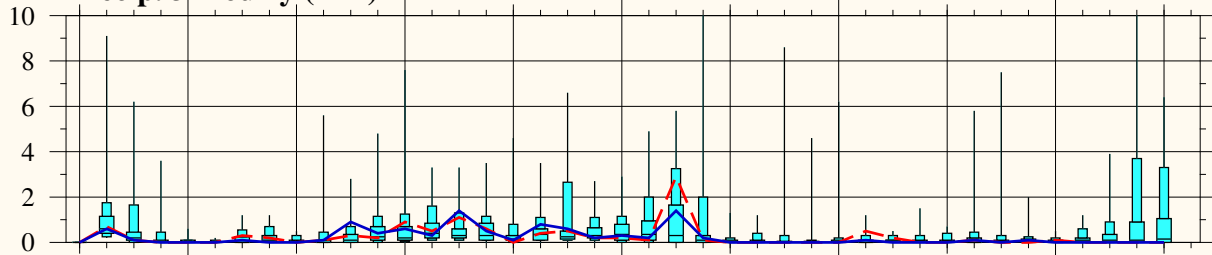


--- Control run  
— Operational run

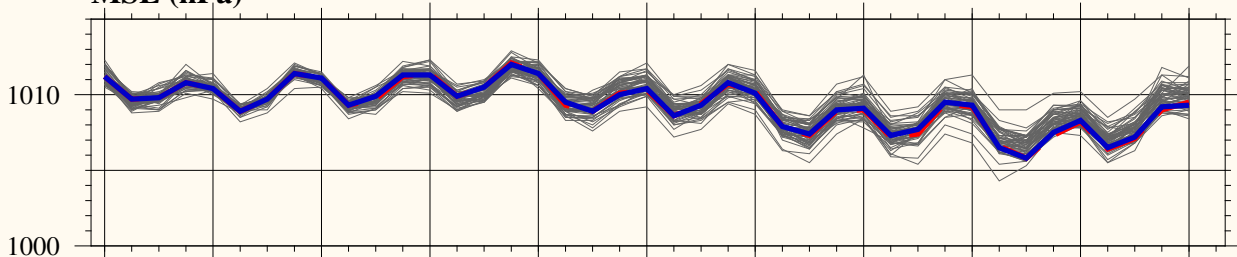
Temp. 2m (C)



Precip. 3-hourly (mm)



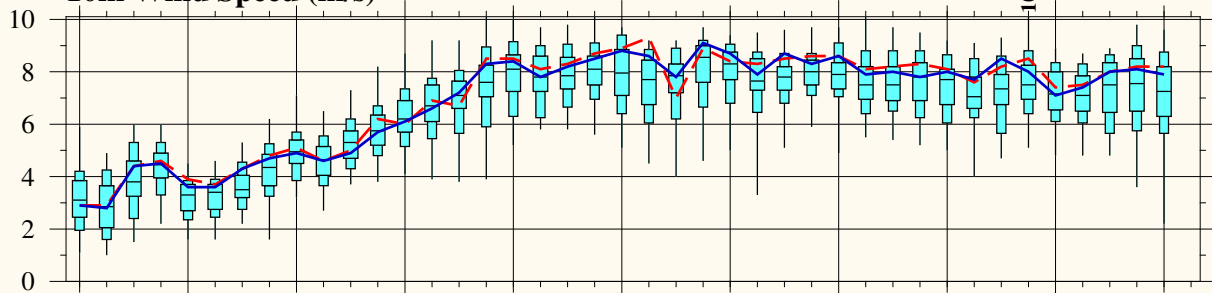
MSL (hPa)



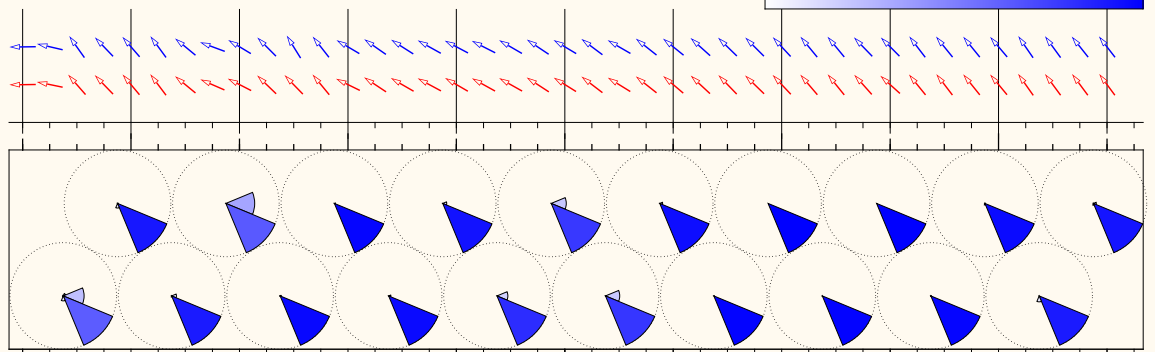
Prob. of gusts exceeding xx Bft (%)



10m Wind Speed (m/s)



Distribution of 10m Wind Direction



Thursday May 02      Friday May 03      Saturday May 04      **Sunday May 05**      Monday May 06      Tuesday May 07

2024