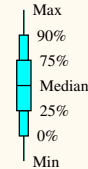


PS142/2 06 00N 018 00W

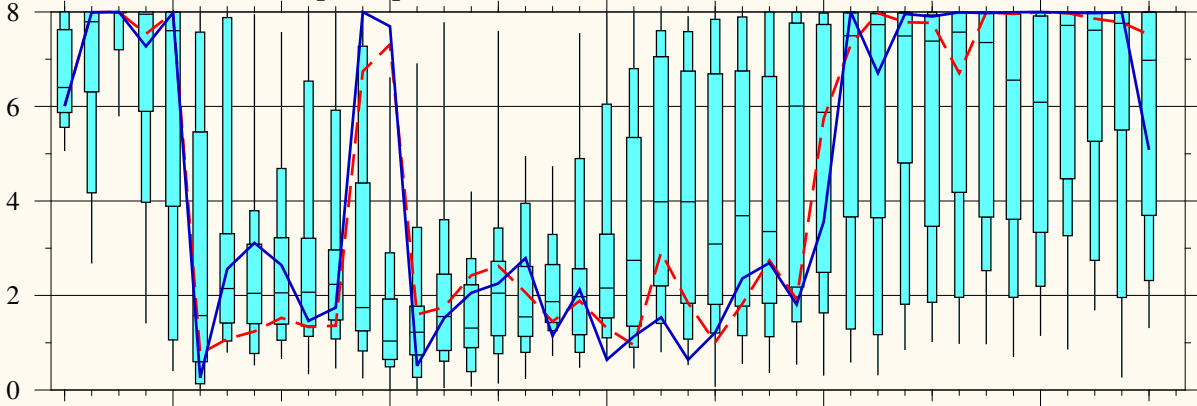
Position: N06.00 / W018.00

Model Base Time:
2024-05-02 / 12z

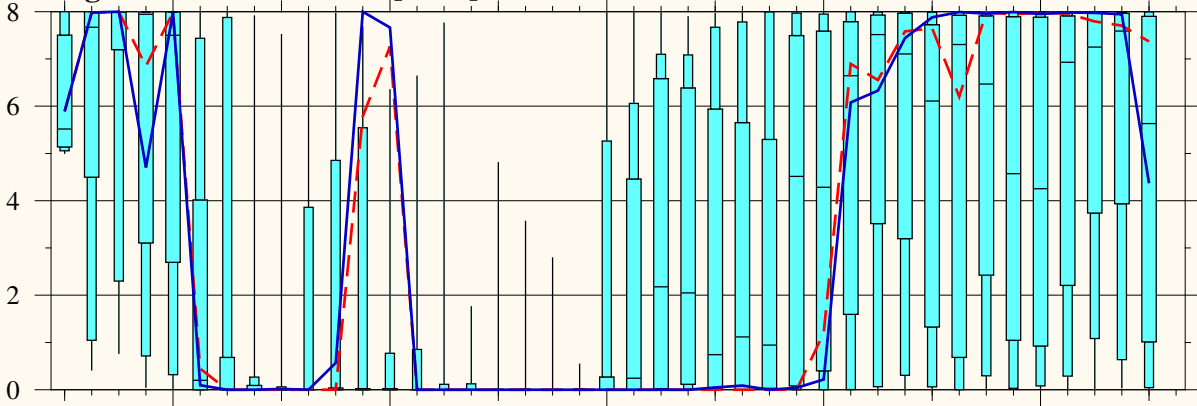


--- Control run
— Operational run

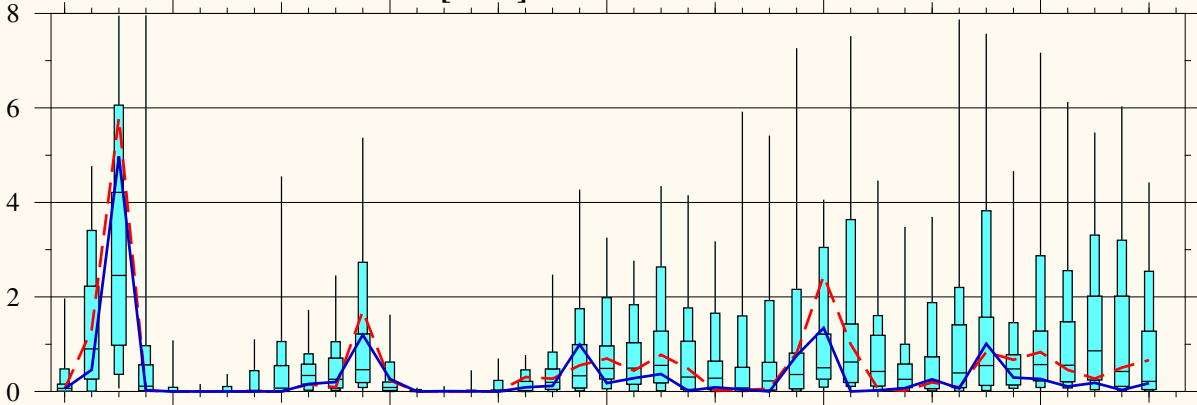
Total Cloud Cover [Octa]



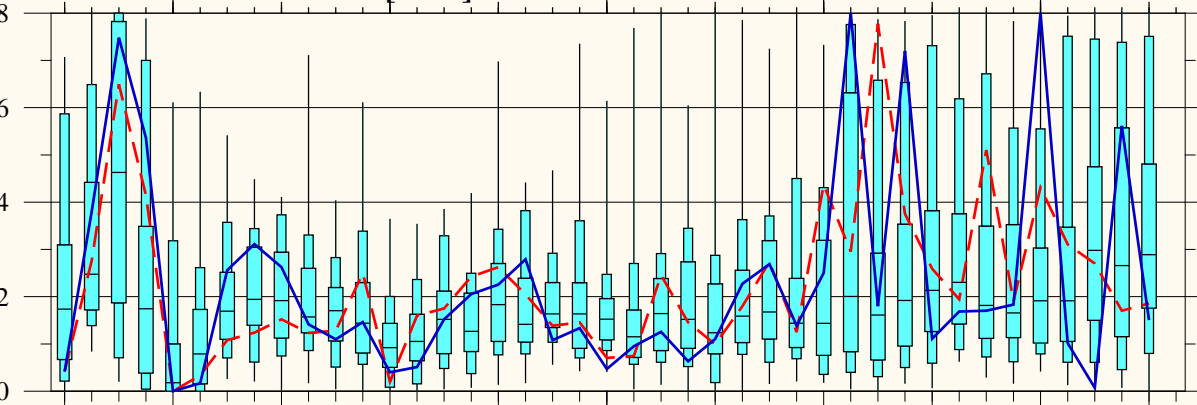
High Level Cloud Cover [Octa]



Medium Level Cloud Cover [Octa]



Low Level Cloud Cover [Octa]



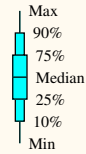
Thursday May 02 Friday May 03 Saturday May 04 **Sunday** May 05 Monday May 06 Tuesday May 07

2024

PS142/2 06 00N 018 00W

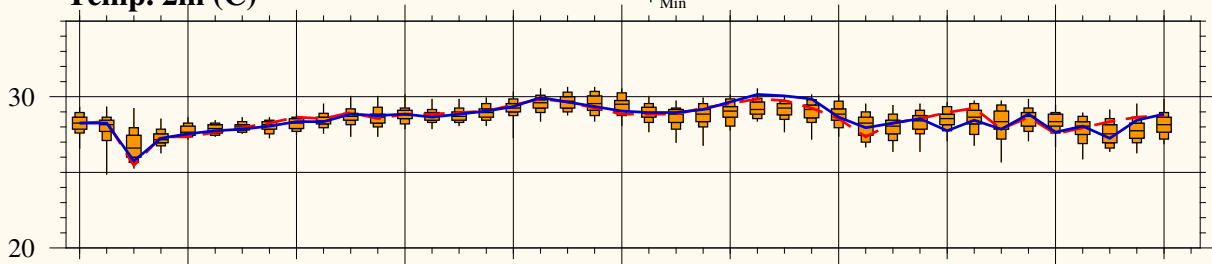
Position: N06.00 / W018.00

Model Base Time:
2024-05-02 / 12z

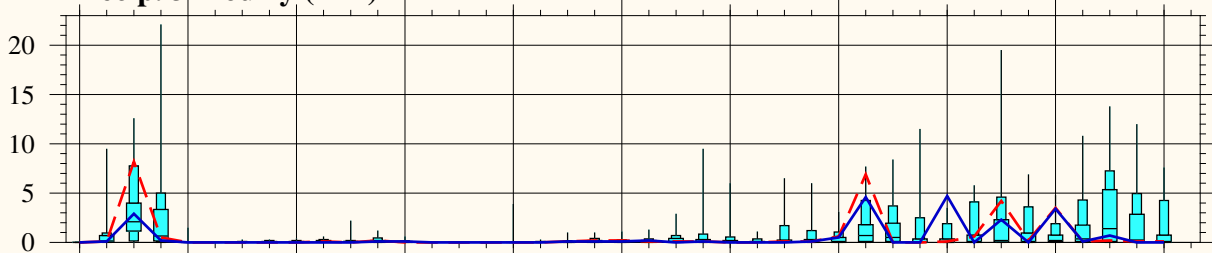


--- Control run
— Operational run

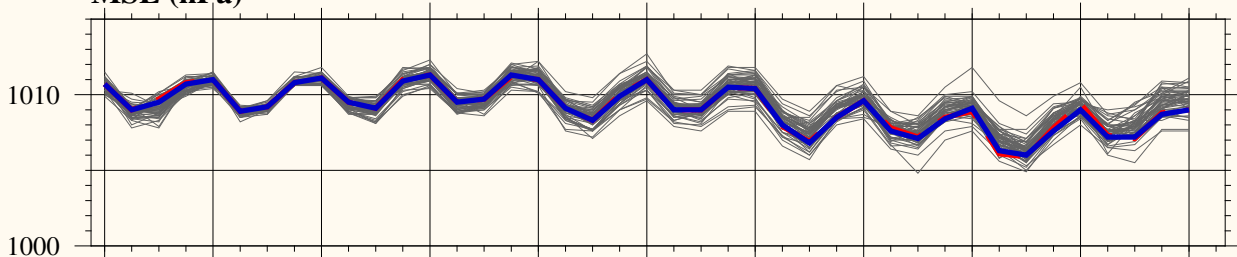
Temp. 2m (C)



Precip. 3-hourly (mm)



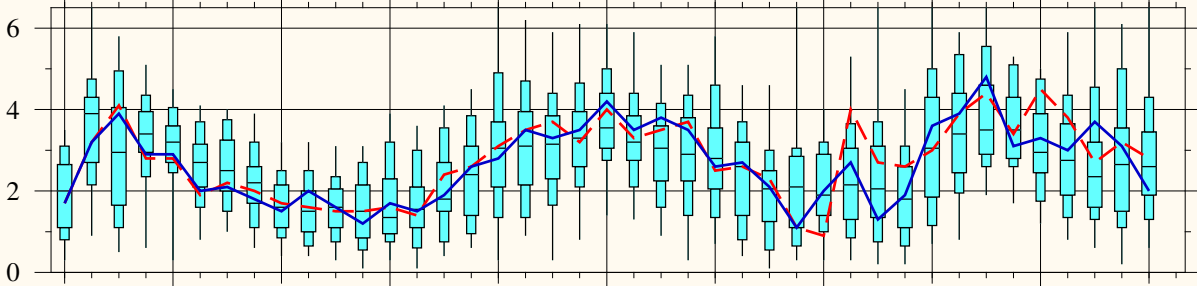
MSL (hPa)



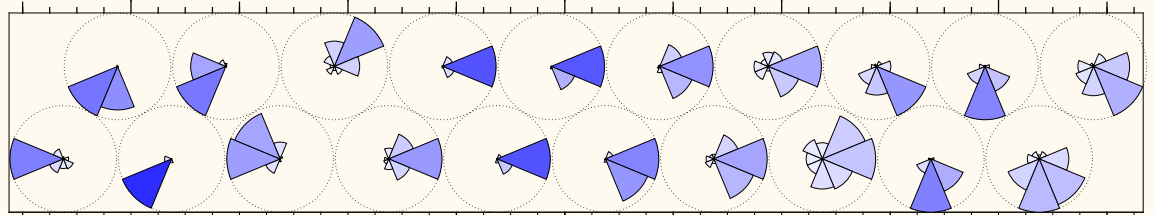
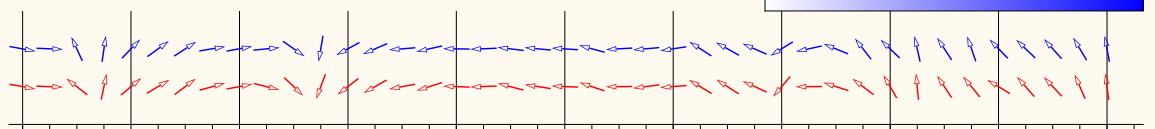
Prob. of gusts exceeding xx Bft (%)



10m Wind Speed (m/s)



Distribution of 10m Wind Direction



Thursday May 02 Friday May 03 Saturday May 04 **Sunday** May 05 Monday May 06 Tuesday May 07

2024