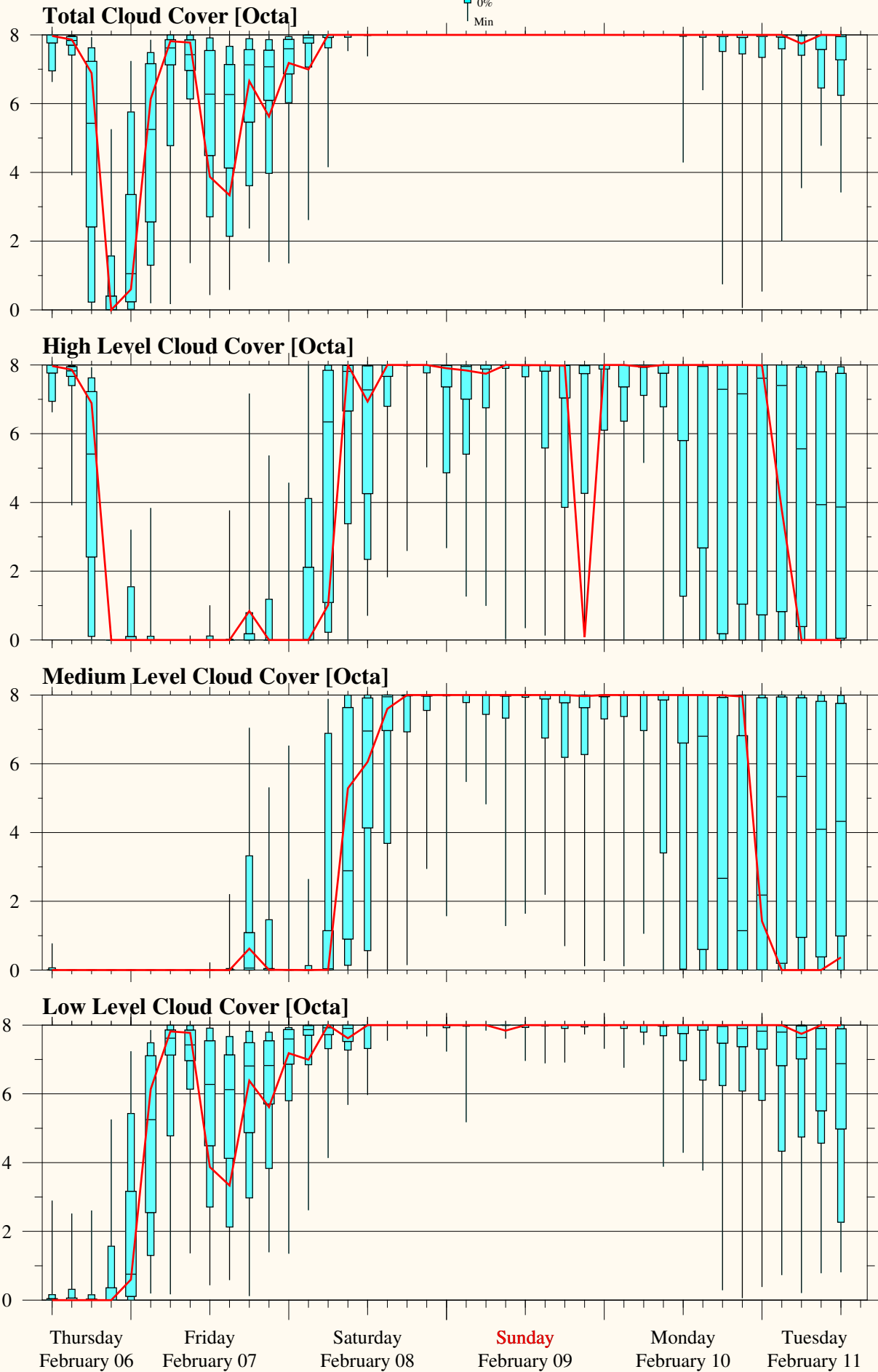


Neumayer-III

Position: S70.67 / W08.27

Model Base Time:
2025-02-06 / 12z

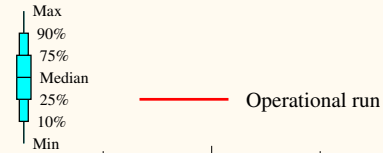


Neumayer-III

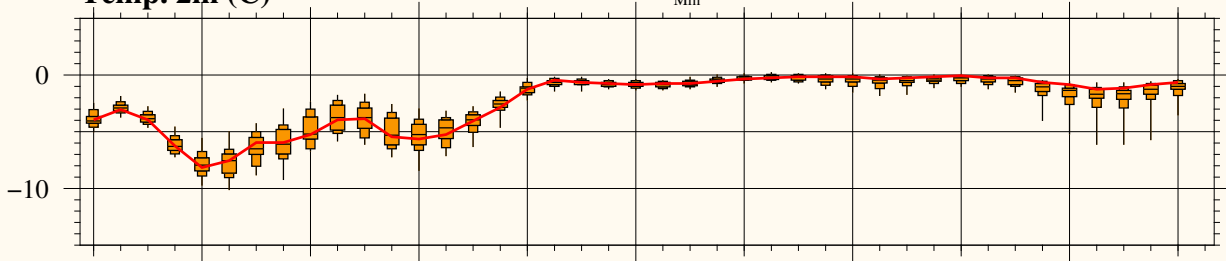
Position: S70.67 / W008.27

Model Base Time:

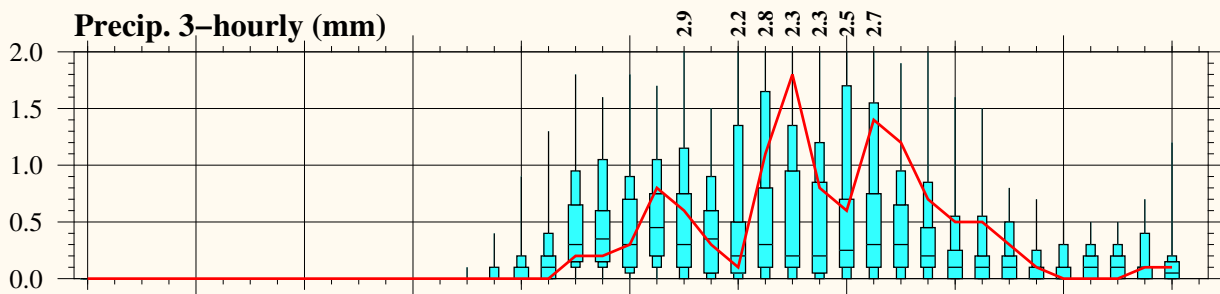
2025-02-06 / 12z



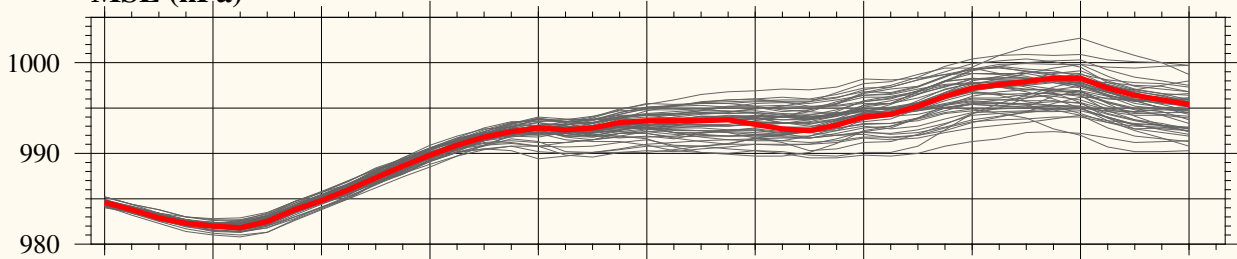
Temp. 2m (C)



Precip. 3-hourly (mm)



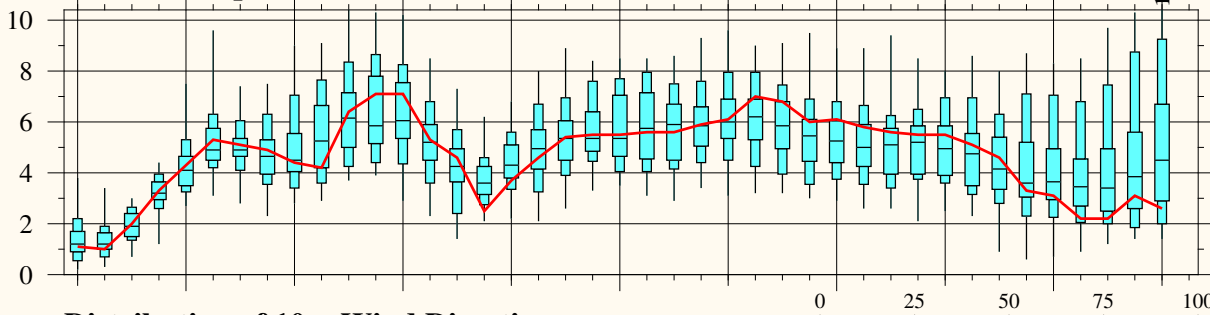
MSL (hPa)



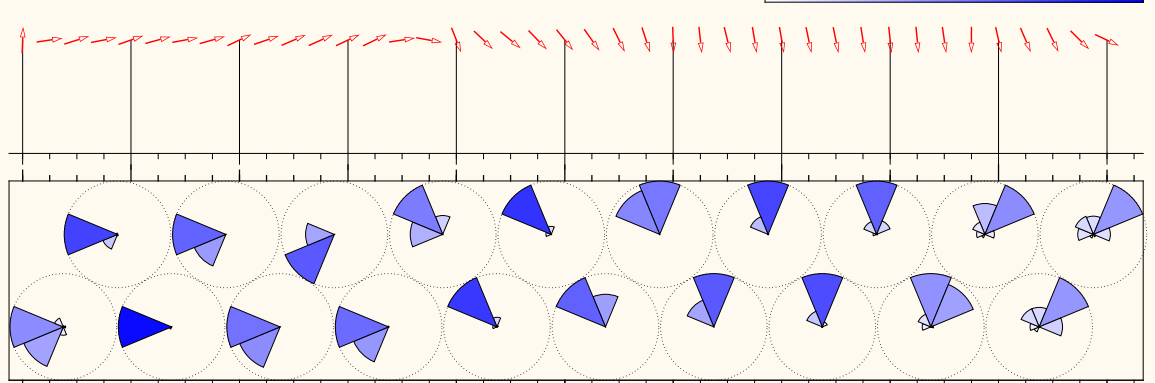
Prob. of gusts exceeding xx Bft (%)



10m Wind Speed (m/s)



Distribution of 10m Wind Direction



Thursday February 06 Friday February 07 Saturday February 08 **Sunday** February 09 Monday February 10 Tuesday February 11

2025