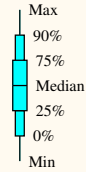


PS146/1 63 30S 000 00E

Position: S63.50 / E000.00

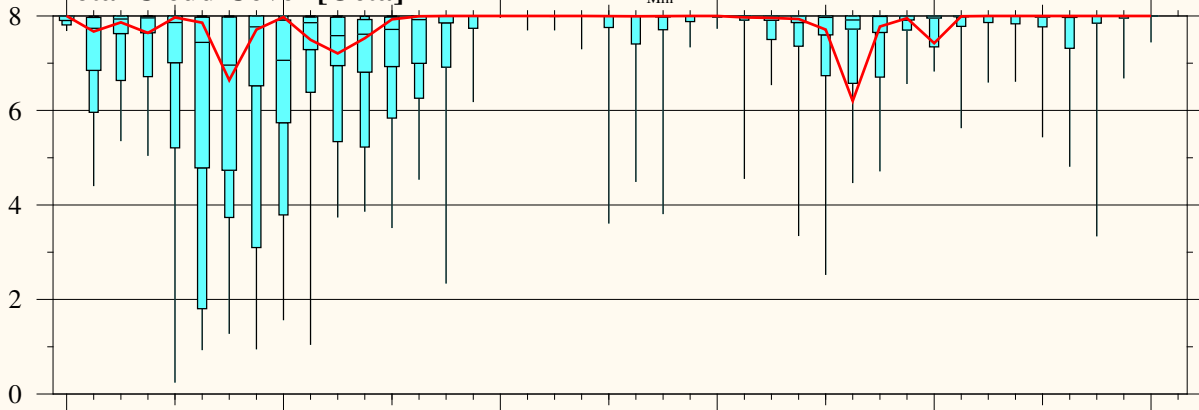
Model Base Time:

2025-02-07 / 00z

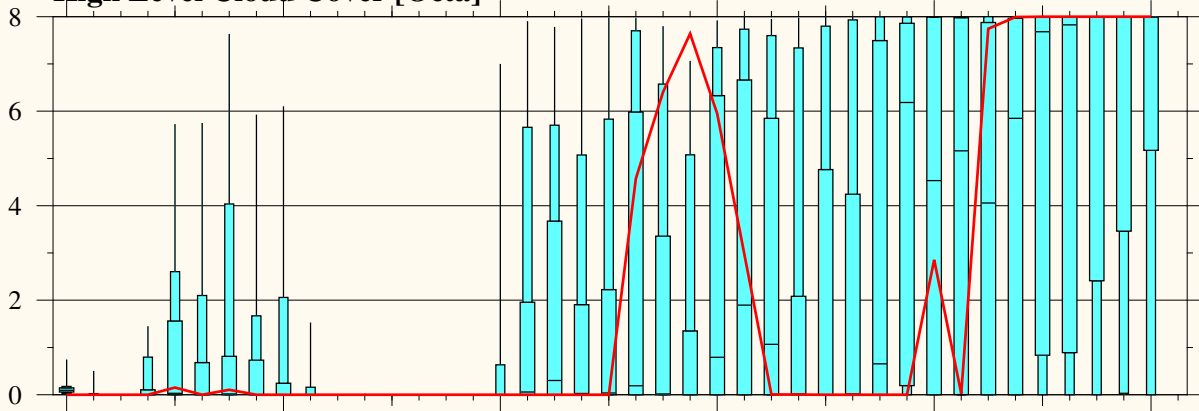


Operational run

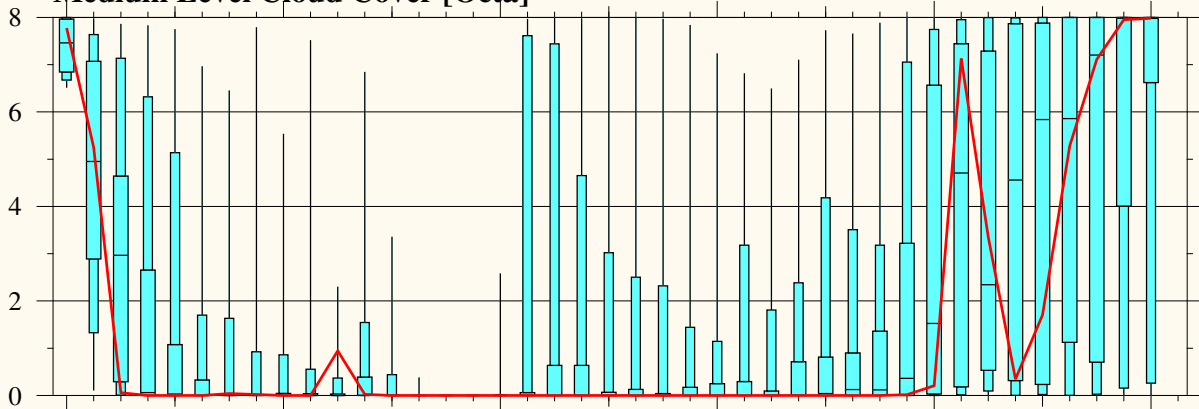
**Total Cloud Cover [Octa]**



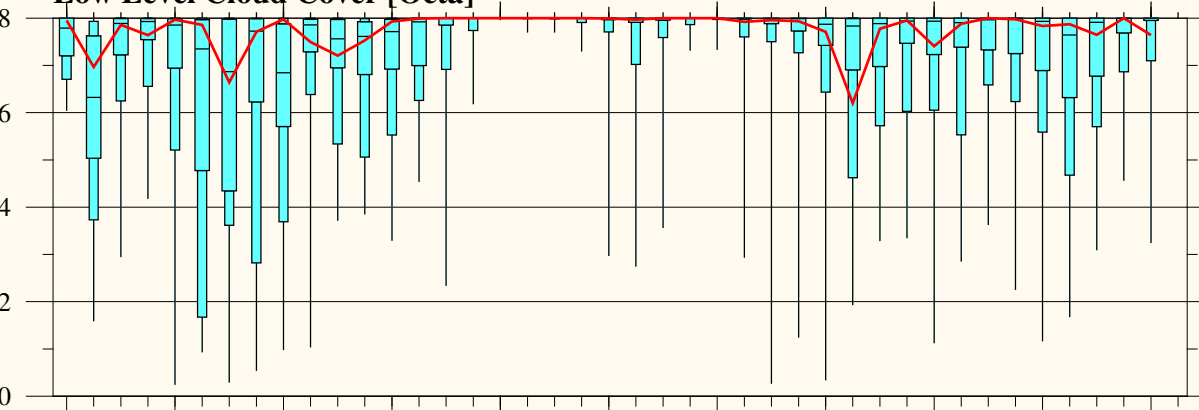
**High Level Cloud Cover [Octa]**



**Medium Level Cloud Cover [Octa]**



**Low Level Cloud Cover [Octa]**



Friday  
February 07

Saturday  
February 08

Sunday  
February 09

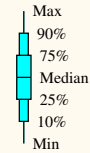
Monday  
February 10

Tuesday  
February 11

2025

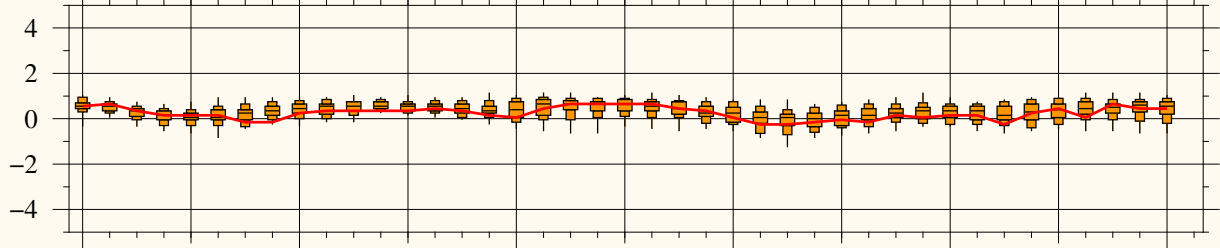
Model Base Time:

2025-02-07 / 00z

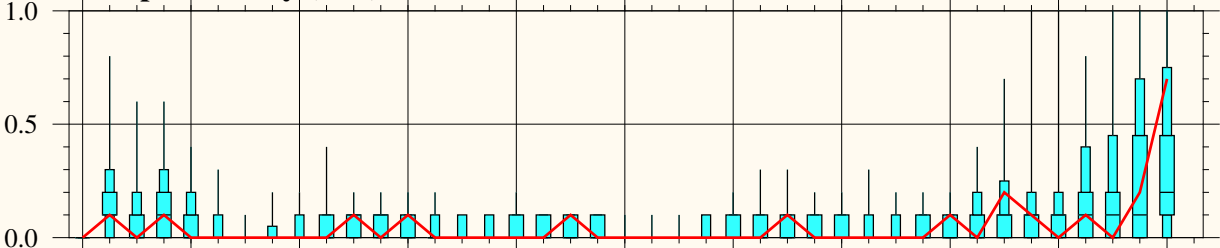


Operational run

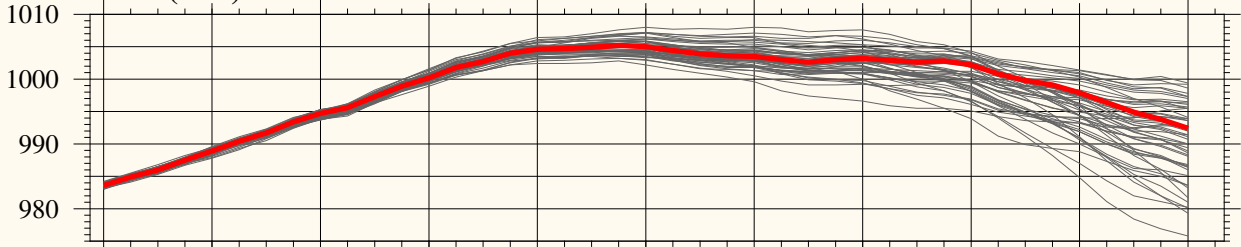
Temp. 2m (C)



Precip. 3-hourly (mm)



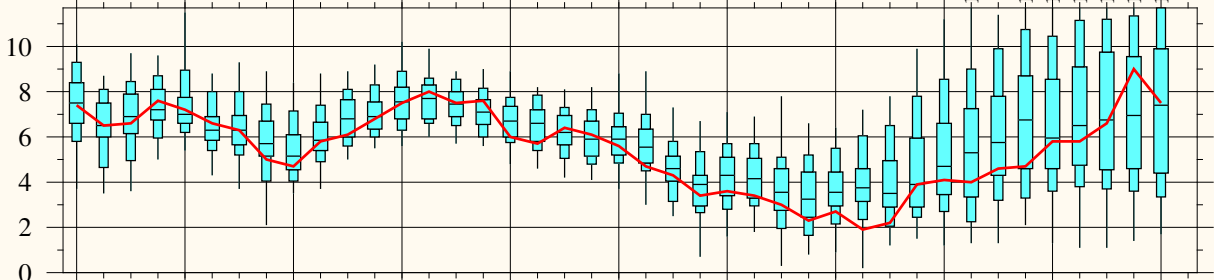
MSL (hPa)



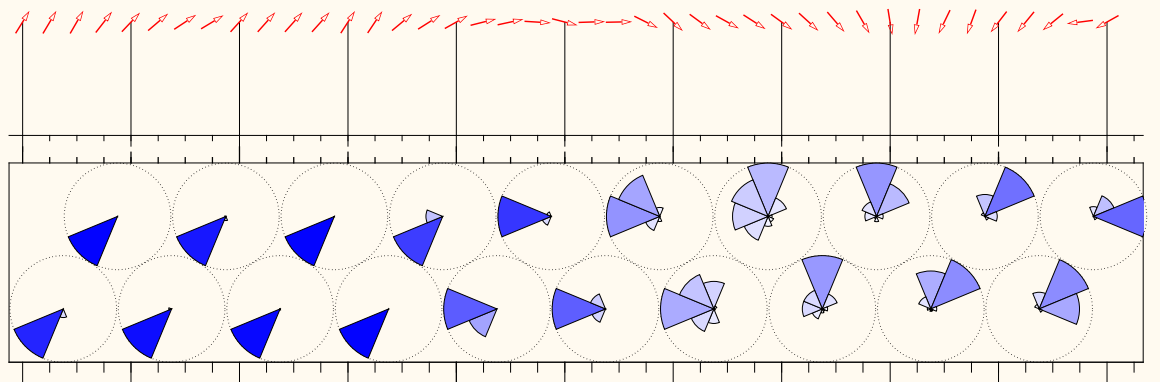
Prob. of gusts exceeding xx Bft (%)



10m Wind Speed (m/s)



Distribution of 10m Wind Direction



Friday  
February 07

Saturday  
February 08

Sunday  
February 09

Monday  
February 10

Tuesday  
February 11

2025