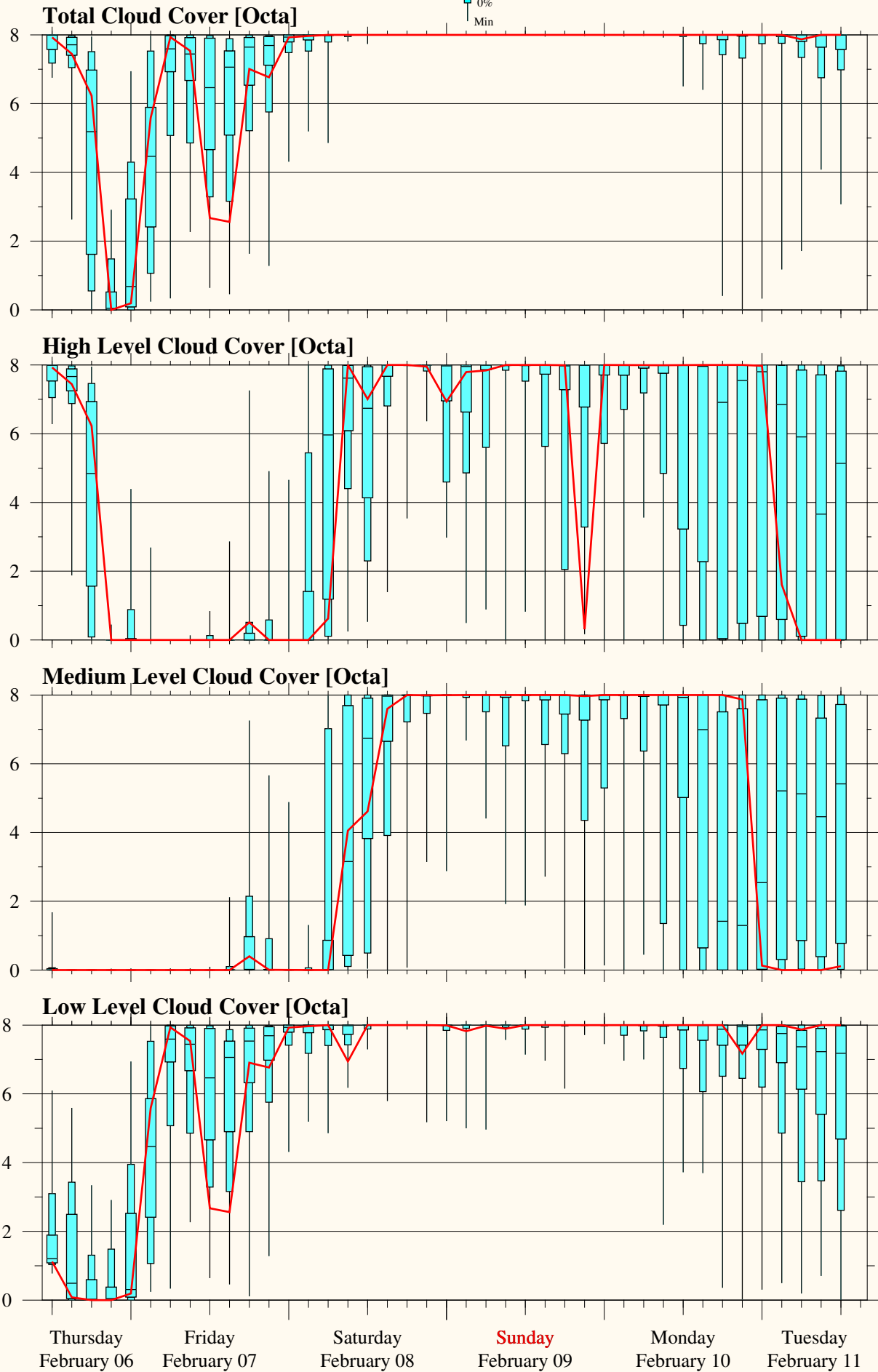
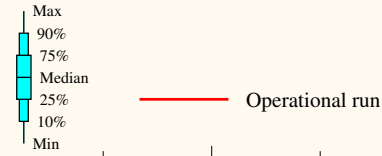


Model Base Time:  
2025-02-06 / 12z

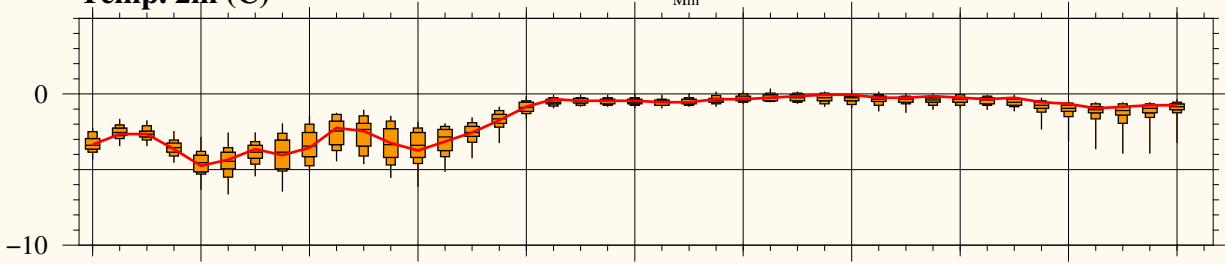


Model Base Time:

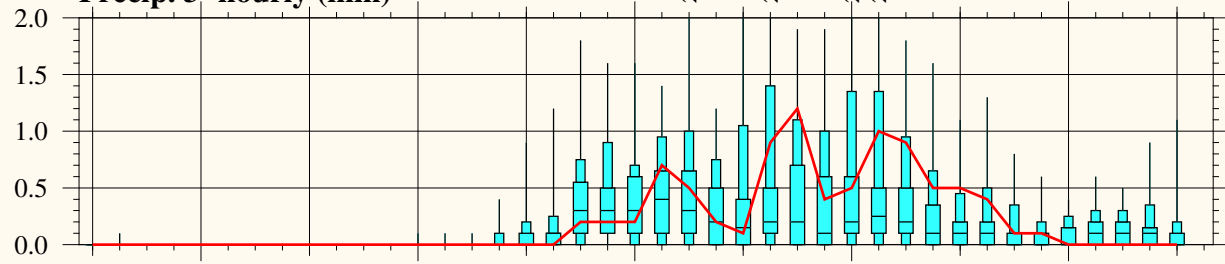
2025-02-06 / 12z



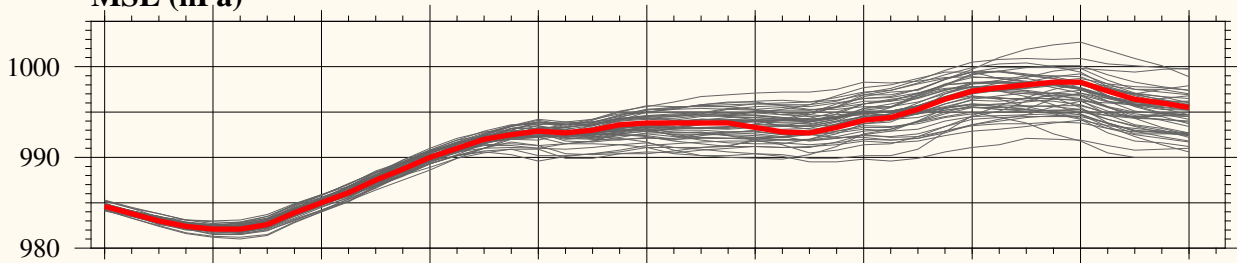
Temp. 2m (C)



Precip. 3-hourly (mm)



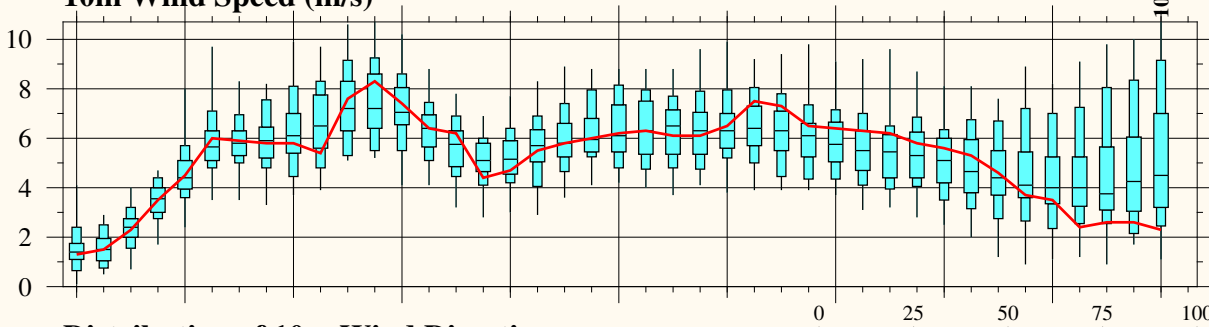
MSL (hPa)



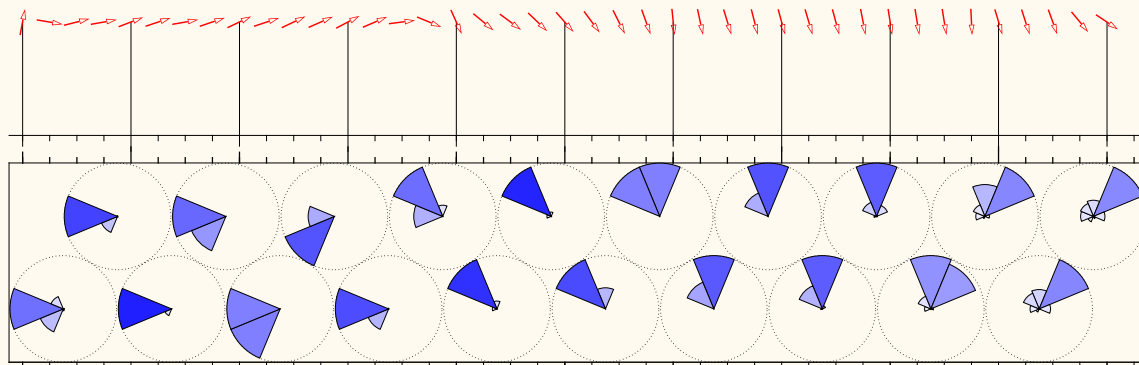
Prob. of gusts exceeding xx Bft (%)



10m Wind Speed (m/s)



Distribution of 10m Wind Direction



Thursday February 06    Friday February 07    Saturday February 08    **Sunday** February 09    Monday February 10    Tuesday February 11

2025