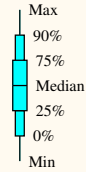


PS 146 69 00S 017 00W

Position: S69.00 / W017.00

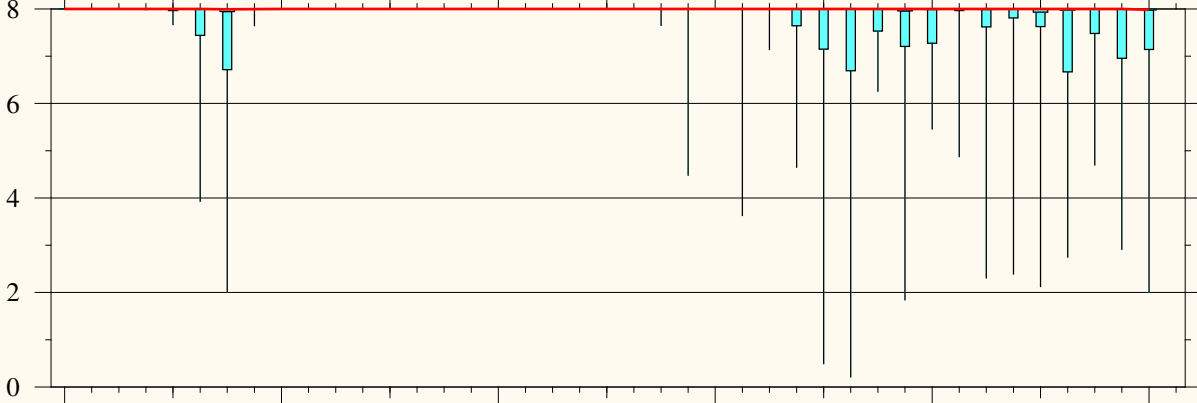
Model Base Time:

2025-02-07 / 00z

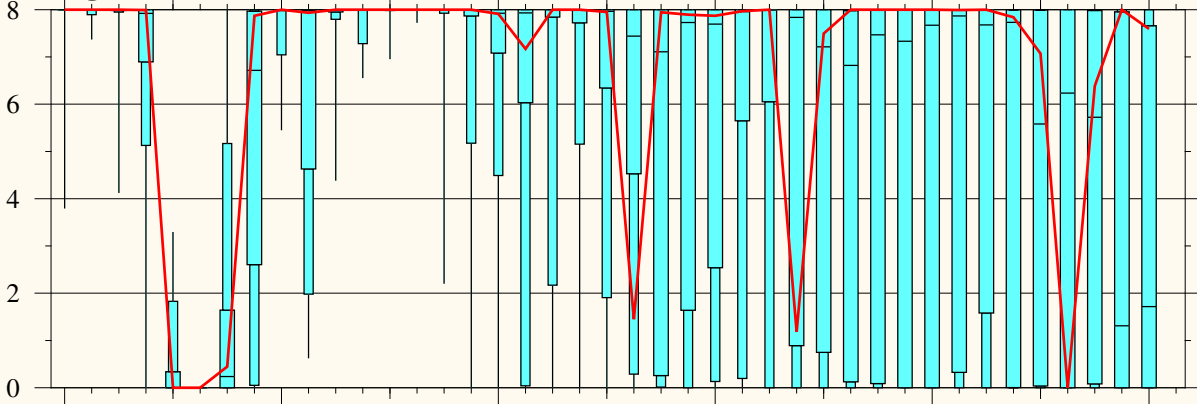


Operational run

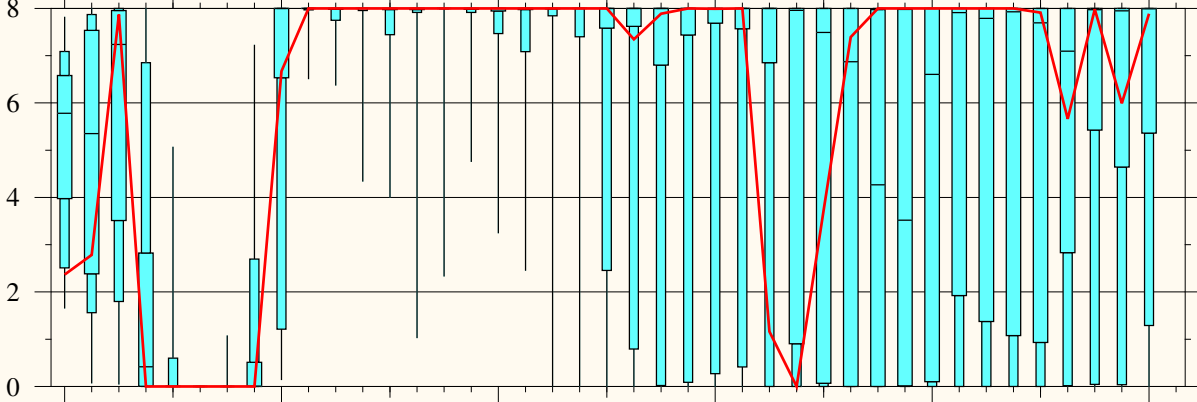
Total Cloud Cover [Octa]



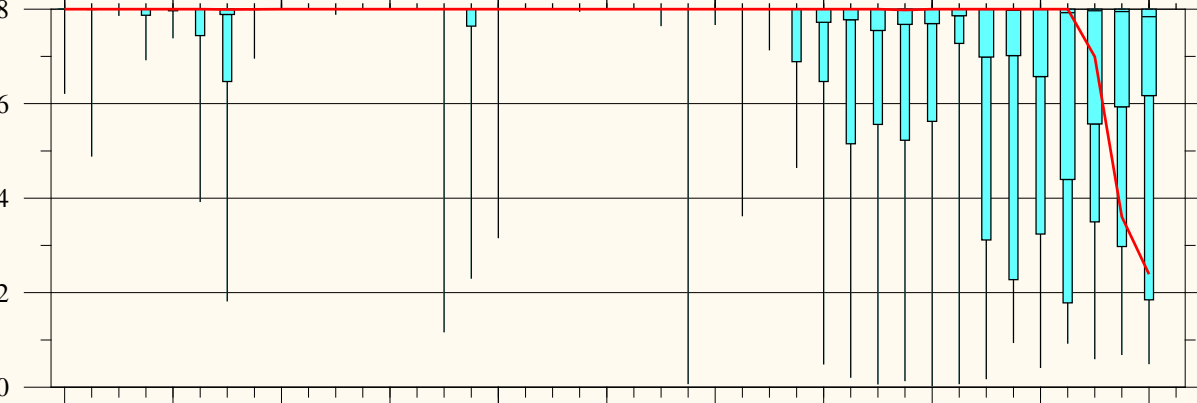
High Level Cloud Cover [Octa]



Medium Level Cloud Cover [Octa]



Low Level Cloud Cover [Octa]



Friday
February 07

Saturday
February 08

Sunday
February 09

Monday
February 10

Tuesday
February 11

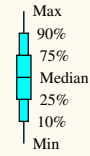
2025

PS 146 69 00S 017 00W

Position: S69.00 / W017.00

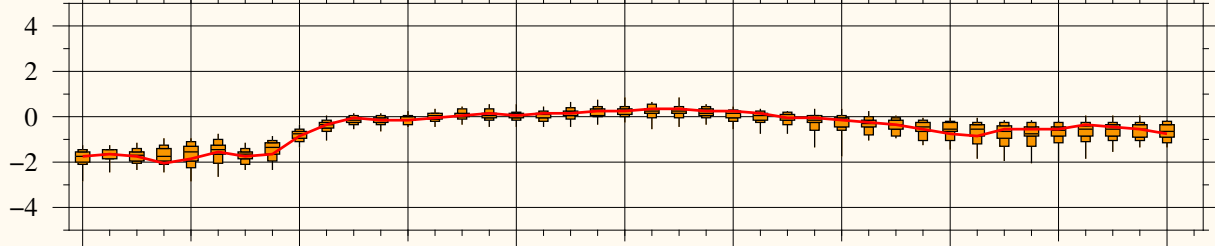
Model Base Time:

2025-02-07 / 00z

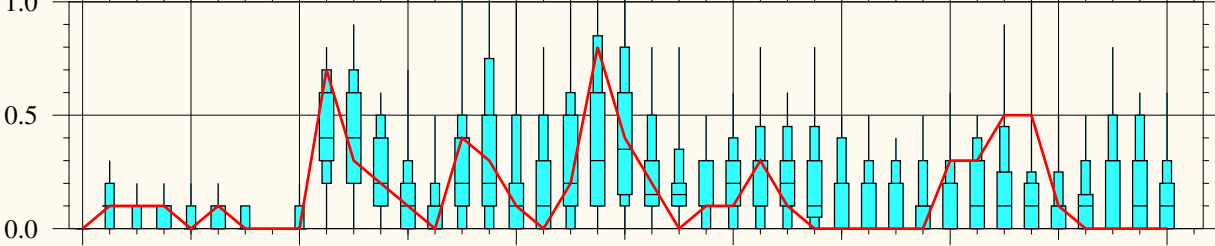


Operational run

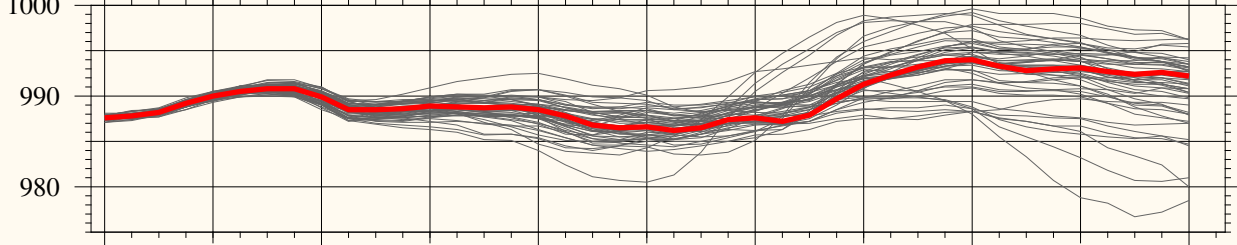
Temp. 2m (C)



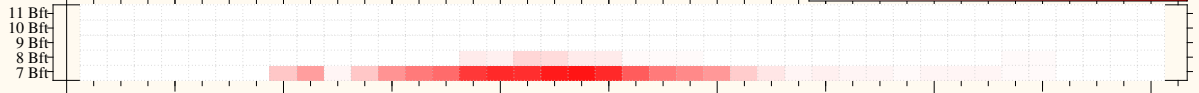
Precip. 3-hourly (mm)



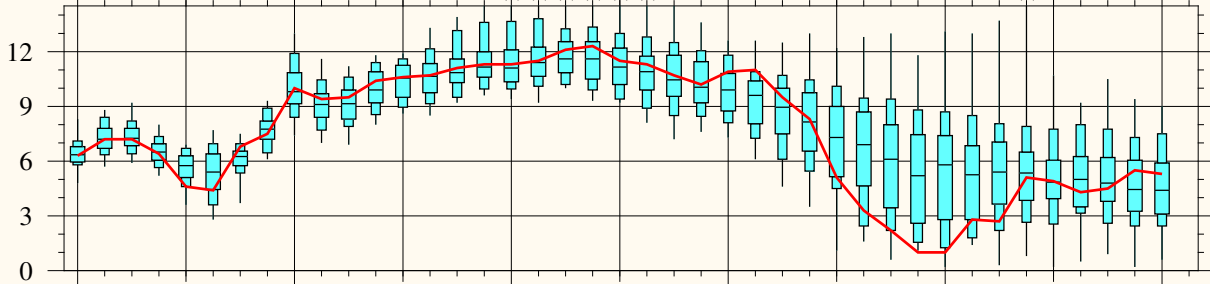
MSL (hPa)



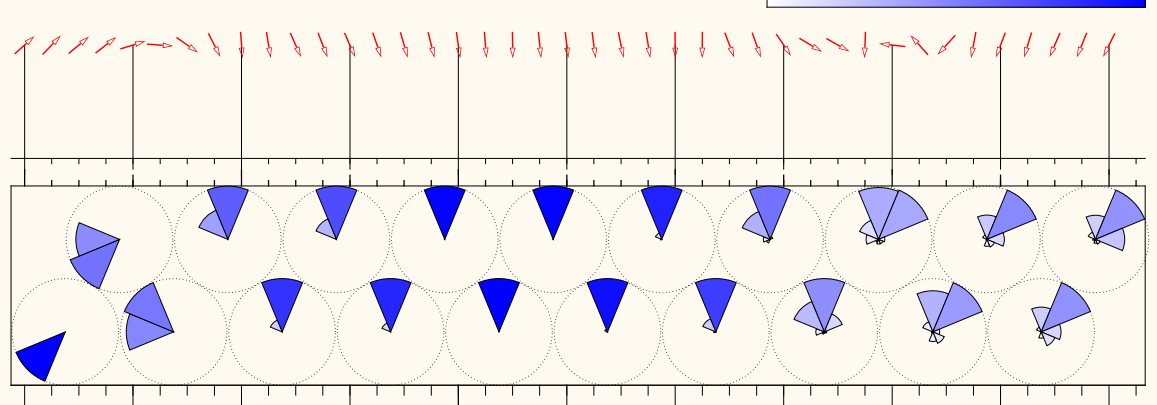
Prob. of gusts exceeding xx Bft (%)



10m Wind Speed (m/s)



Distribution of 10m Wind Direction



Friday
February 07

Saturday
February 08

Sunday
February 09

Monday
February 10

Tuesday
February 11

2025